



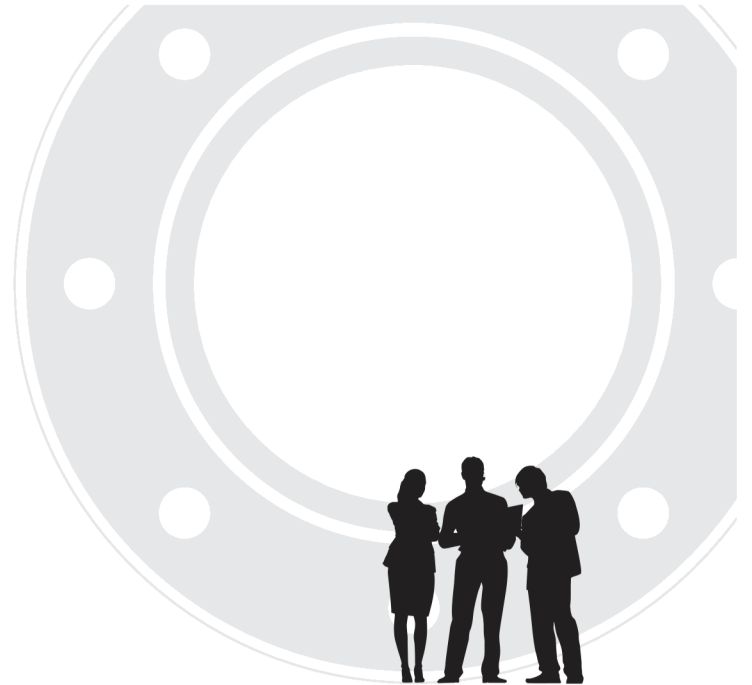
*“Your Trusted Partner for Forged Components,
Flanges & Overlay Welding Solutions”*

WELKO GLOBAL CO., LTD.

01

COMPANY OVERVIEW

**“Your Trusted Partner
for Forged Components,
Flanges & Overlay Welding
Solutions”**



WELKO is specialized in machining and overlay/special welding of high-quality forged components for the petrochemical, power generation, construction and heavy industry.

Technology

Core Welding Expertise

Quality

Full International Certification

Trust

Global Partnership

Innovation

Sustainable Growth



02

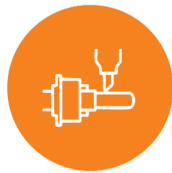
FACILITY & QUALITY

FACILITY

Range of facilities for the perfect product



PRODUCTION FACILITY



MACHINING



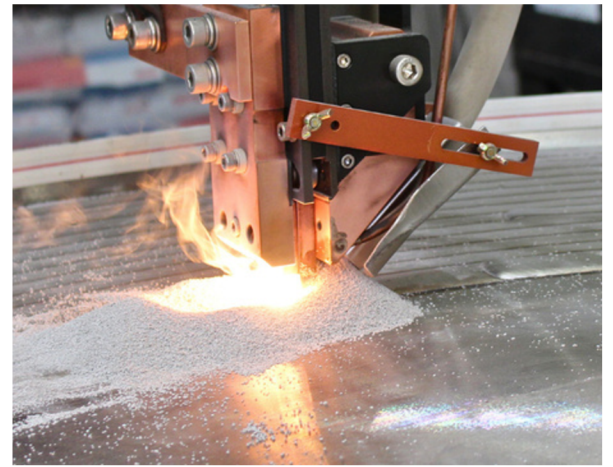
CNC MACHINING



WELDING



INSPECTION



QUALITY

Total quality management from raw material to final product



ISO 9001:2015
Quality Management Systems



ISO 14001:2015
Environmental Management Systems



ISO 45001:2018
Occupational Health and Safety
Management Systems



Certificate of Patent
Automatic welding apparatus



Certificate of Patent
Apparatus for supplying welding
electrode of high hardness



Certificate of Membership
KITA

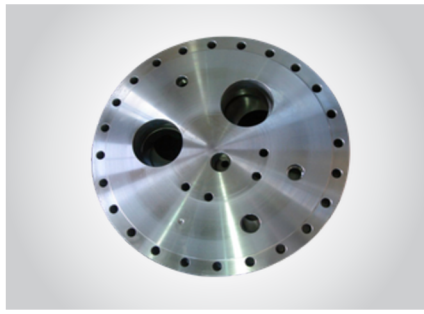


03

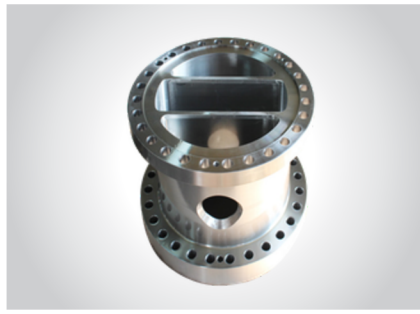
MAJOR PRODUCTS

CUSTOMIZED & STANDARD

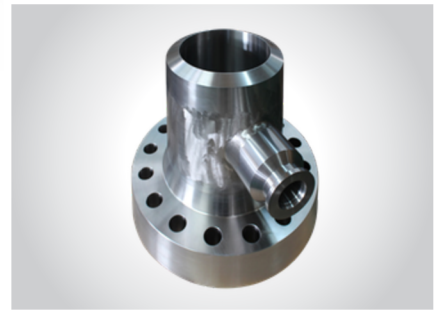
High performance components for demanding industries



SPECIAL FORGING



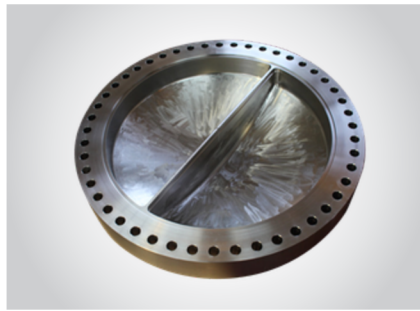
SPECIAL FORGING



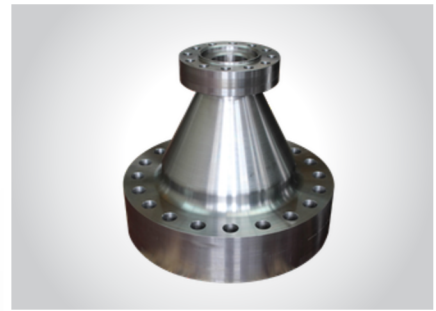
SPECIAL FORGING



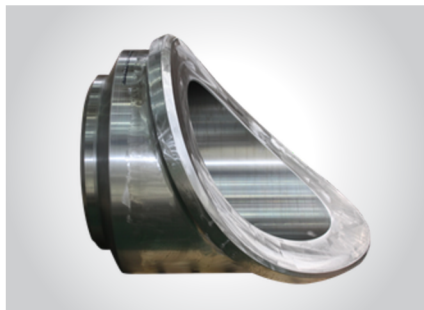
SPECIAL FORGING



SPECIAL FORGING



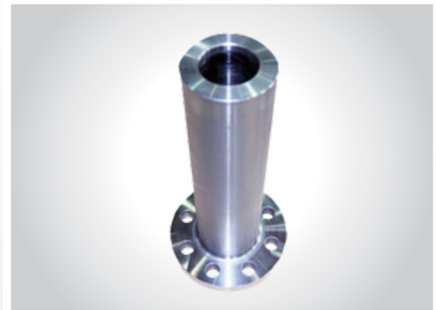
SPECIAL FORGING



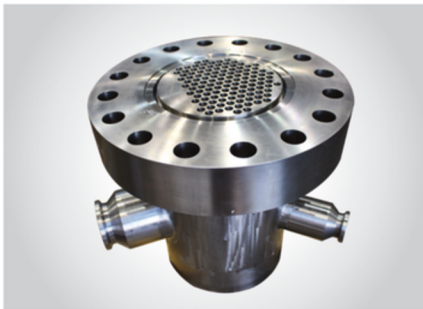
FORGED NOZZLE



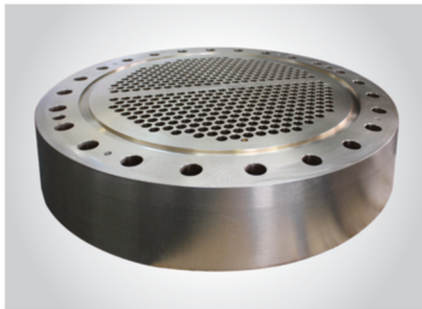
FORGED NOZZLE



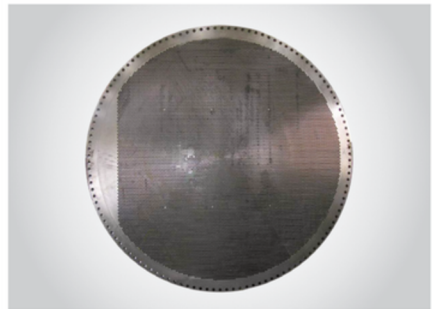
LONG WELDING NECK FLANGE (LWN)



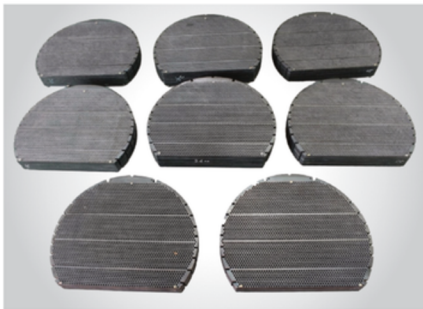
TUBE SHEET



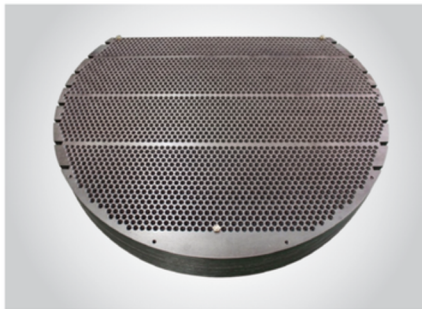
TUBE SHEET



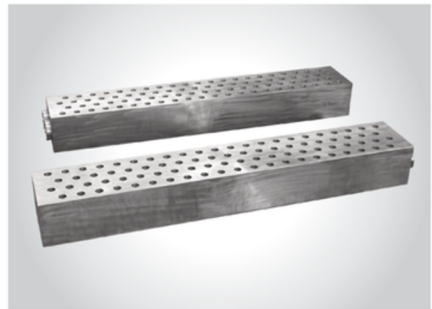
TUBE SHEET



BAFFLE PLATE



BAFFLE PLATE



FORGED HEADER BLOCK



ORIFICE FLANGE



SAE FLANGES



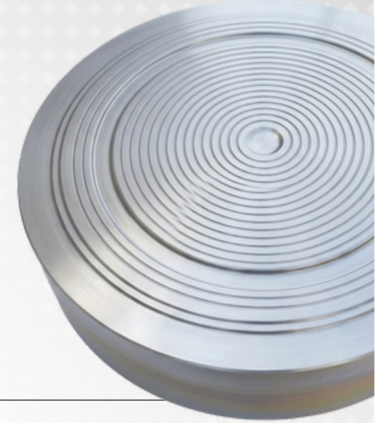
STANDARD FLANGES

03

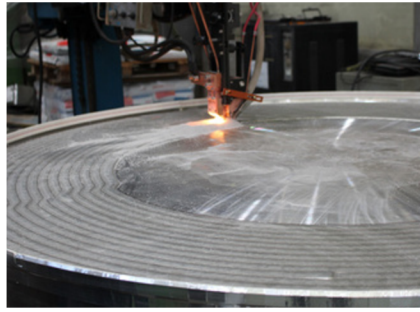
MAJOR PRODUCTS

WELDING & CLADDING

Advanced weld overlay technology expertise



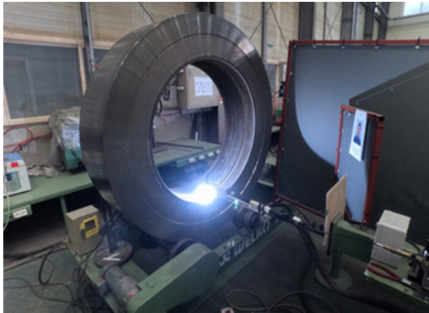
ESW PRODUCT



ESW WELDING



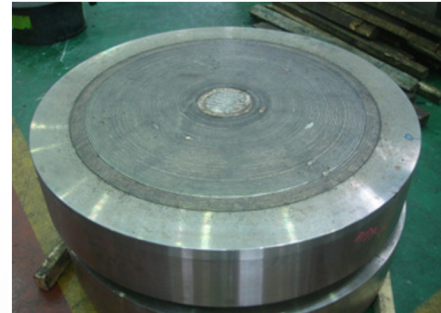
GTAW WELDING (DISC)



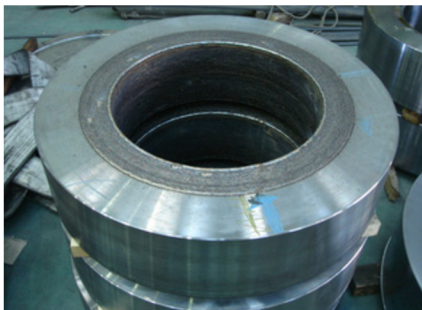
GTAW WELDING (RING)



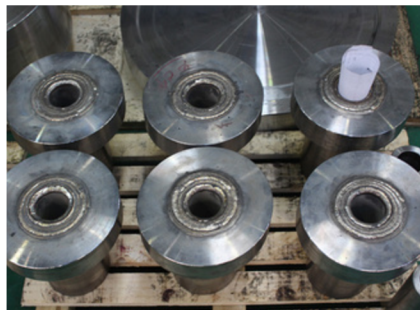
SAW WELDING



WELD OVERLAY DISC



WELD OVERLAY RING



WELD OVERLAY NOZZLE

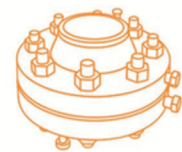


EXPLOSION BONDED PRODUCT (CLAD)

Main Material (JIS, DIN, ASTM, etc. available)

GRADE	CHEMICAL COMPOSITION									UNS NO.	DIN	Tensile Strength	Yield Strength	Brinell
	C	Mn	P	S	Si	Ni	Cr	Mo	N			Min. ksi(MPa)	Min. ksi(MPa)	Hardness
LOW ALLOY STEELS														
F1	0.28	0.06-0.90	0.045	0.045	0.15-0.35			0.44-0.65		K12822	15MO3	70(485)	40(275)	143-192
F5	0.15	0.3-0.60	0.03	0.03	0.5	0.5	4.0-6.0	0.44-0.65		K41545	12CrMo19-5	70(485)	40(275)	143-217
F9	0.15	0.3-0.60	0.03	0.03	0.50-1.10		8.0-10.0	0.90-1.10		K90941	12-CrMo9-1	85(585)	55(380)	179-217
F91	0.08-0.12	0.3-0.60	0.02	0.01	0.20-0.50	0.4	8.0-9.5	0.85-1.05		K90901	X10CrMovN69-1	85(585)	60(415)	248max
F92	0.07-0.13	0.3-0.60	0.02	0.01	0.5	0.4	8.50-9.50	0.30-0.60				90(620)	64(440)	269max
F11	0.05-0.15	0.3-0.60	0.03	0.03	0.50-1.00		1.00-1.50	0.44-0.65		K11597	13CrMo44	60(415)	30(205)	121-174
F12	0.05-0.15	0.3-0.60	0.045	0.045	0.5		0.8-1.25	0.44-0.65		K11562	16CrMo44	60(415)	32(220)	121-174
F22	0.05-0.15	0.3-0.60	0.04	0.04	0.5		2.00-2.50	0.87-1.13		K21590	10CrMo9-10	60(415)	30(205)	170max
F23	0.04-0.10	0.10-0.60	0.03	0.01	0.5		1.92-2.60	0.05-0.30		K41650		74(510)	58(400)	220max
SCM440	0.38-0.43	0.60-0.90	0.03	0.03	0.15-0.35	0.25	1.90-1.20	0.15-0.30			42CrMo4			
SNCM439	0.36-0.43	0.60-0.90	0.03	0.03	0.15-0.35	1.60-2.00	0.60-1.00	0.15-0.30			36CrNiMo4			
SCM430	0.28-0.33	0.60-0.90	0.03	0.03	0.15-0.35	0.25	0.90-1.20	0.15-0.30						
LF3	0.2	0.9	0.035	0.04	0.20-0.35	3.3-3.7	0.3	0.12						
STAINLESS STEELS (MARTENSITIC)														
F6a	0.15	1	0.04	0.03	1	0.5	11.5-13.5			S41000	X12Cr13	70(485)	40(275)	143-207
STAINLESS STEELS (FERRITIC)														
F429	0.12	1	0.04	0.03	0.75	0.5	14.0-16.0			S42900		60(415)	35(240)	190max
F430	0.12	1	0.04	0.03	0.75	0.5	16.0-18.0			S43000		60(415)	35(240)	190max
STAINLESS STEELS (AUSTENITIC)														
F304L	0.03	2	0.045	0.03	1	8.0-13.0	18.0-20.0			S30403	x2CrNi19-11	70(485)	25(170)	
F310	0.25	2	0.045	0.03	1	19.0-22.0	24.0-26.0			S31000	X12CrNi25-20	75(515)	30(205)	
F316L	0.03	2	0.045	0.03	1	10.0-15.0	16.0-18.0	2.0-3.0		S31603	X2CrNiMo18-14-3	70(485)	25(170)	
F317L	0.03	2	0.045	0.03	1	11.0-15.0	18.0-20.0	3.0-4.0		SS31703		70(485)	25(170)	
F321	0.08	2	0.045	0.03	1	9.0-12.0	17.0-19.0			S32100	X6CrNiTi18-10	75(515)	30(205)	
F347	0.08	2	0.045	0.03	1	9.0-13.0	17.0-20.0			S34700	X6CrNiNb18-10	75(515)	30(205)	
F44	0.02	1	0.03	0.01	0.8	17.5-18.5	19.5-20.5	6.0-6.5		S31254		94(650)	44(300)	
310S	0.06					20	25			S31008		515-75	205	
904L	0.02					25	20	4.5	Nca15cu	N08904		550	245	
254	0.02					18	20	6.2	N.cu	S31254		655	350	
6MO.1925	0.02					24	21	6.2	N.cu	No8926		650	295	
STAINLESS STEELS (DUPLEX)														
F51	0.03	2	0.03	0.02	1	4.5-6.5	21.0-23.0	2.5-3.5		S31803	X2CrNiMoN22-5-3	90(620)	65(450)	
F53	0.03	1.2	0.035	0.02	0.8	6.8-8.0	24.0-26.0	3.0-5.0		S32750	X2CrNiMoCuWN25-7-4	116(800)	80(550)	310max
F904L	0.03	2	0.04	0.03	1	23.0-28.0	19.0-23.0	4.0-5.0		NO8904		71(490)	31(215)	
SUSF329J3L	0.03	2	0.04	0.03	1	4.50-6.50	21.0-24.0	2.50-3.50	0.08-0.20					
F60										S32205				
CARBON STEELS														
A105	0.35	0.60-1.05	0.035	0.04	0.10-0.35	0.4	0.3	0.12			CK25	70(485)	36(250)	187
A350LF2	0.3	0.60-1.35	0.035	0.04	0.15-0.30	0.4	0.3	0.12				70-95(485-655)	36(250)	197
A350LF3	0.2	0.9	0.035	0.04	0.20-0.35	3.3-3.7	0.3	0.12				70-95(485-655)	37.5(260)	
A694/F65	0.26	1.4	0.025	0.025	0.15-0.35							77(530)	65(450)	
S45C	0.42-0.48	0.60-0.90	0.3	0.35	0.15-0.35						CK45			
ALLOY STEELS														
ALLOY20	0.07	2	0.45	0.35	1	32-38	19-21	2.0-3.0		NO8020	2.466			
ALLOY625	0.1	0.5	0.015	0.015	0.5	58	20-23	8.0-10.0		NO6625	2.4856			
ALLOY800	0.1	1.5		0.015	1	30-35	19-23			NO8800				
A800H/HT	0.05-0.10	1.5		0.015	1	30-35	19-23			NO8810/11				
ALLOY825	0.05	1		0.03	0.5	38-46	19.5-23.5	2.50-3.50		NO8825	2.4858			
ALLOY600	0.15					76	15		Fe=8	NO6600	2.4816	550	240	
ALLOY 800H/800HT	0.08					32	21		Fe=46	NO8810/NO8811	1.4958/1.4876	450	170	
ALLOY C276	0.01					57	16	16	Fe=5.5	NO10276	2.4819	690	283	
ALLOY 400	0.15					65			Fe=1.6	NO4400	2.4366/2.4360	195	485	
B171 C46400									Cu=60					
B171 C70600		1				9.0 11.0			Cu=88					

WELKO



WELKO GLOBAL CO., LTD.

30, Hwajeonsandan 5-ro 74beon-gil, Gangseo-gu, Busan 46738, Korea

T +82. 51. 311. 4720

F +82. 51. 311. 4719

E andrea@welko.co.kr

W www.welko.co.kr